



North Carolina Ports Overview

North Carolina Ports Fast Facts

Two deep water terminals and one inland port serving the Carolinas

- 5,000+ container gate moves per week.
- 324,000+ TEU annually
- 4M+ tons of general cargo per year
- 1000 ship calls annually

Financial summary – FY21

- Annual revenue \$60 million
- Annual cash generation \$20+ million
- Profit \$3.0 million
- Directly employs ~220
- Governed by a 11-member Board of Directors

Port of Wilmington

- Containers, bulk, breakbulk
- Roll-on/Roll-off
- 284 acres
- Navigation channel: 42 ft.
- Accommodate 1,200+ ft. LOA & 158 ft. beam vessels
- 1 million sq. ft. of covered storage & 125 acres of open storage
- NC Ports employees perform terminal operations



Port of Morehead City

- Bulk, breakbulk and Ro/Ro
- 128 acres, plus an additional 150 acres on Radio Island
- Navigation channel: 45 ft.
- 9 Berths with 5,366 ft. of wharf frontage
- More than 1 million sq. ft. of storage space
- Rail served by Norfolk Southern



Charlotte Inland Port

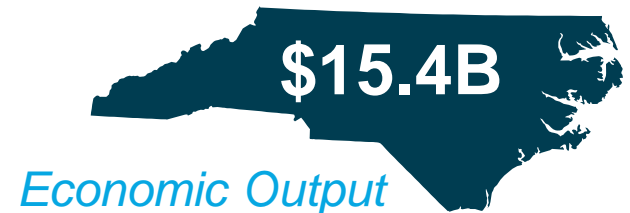
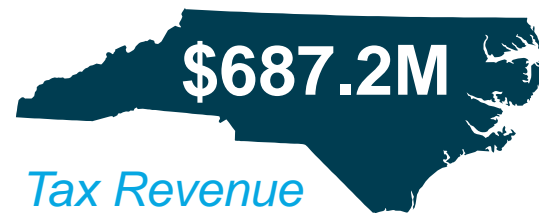
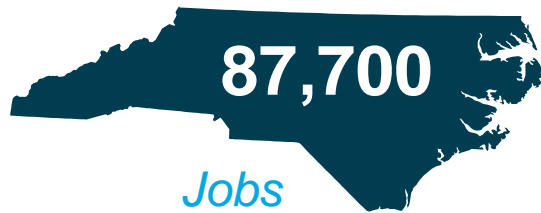
- 20 acres
- Accommodates 2,000 grounded/wheeled containers
- Serves as staging area for empty and loaded containers
- Serves I-85 & I-77 corridors
- Onsite maintenance & repair services



Mission

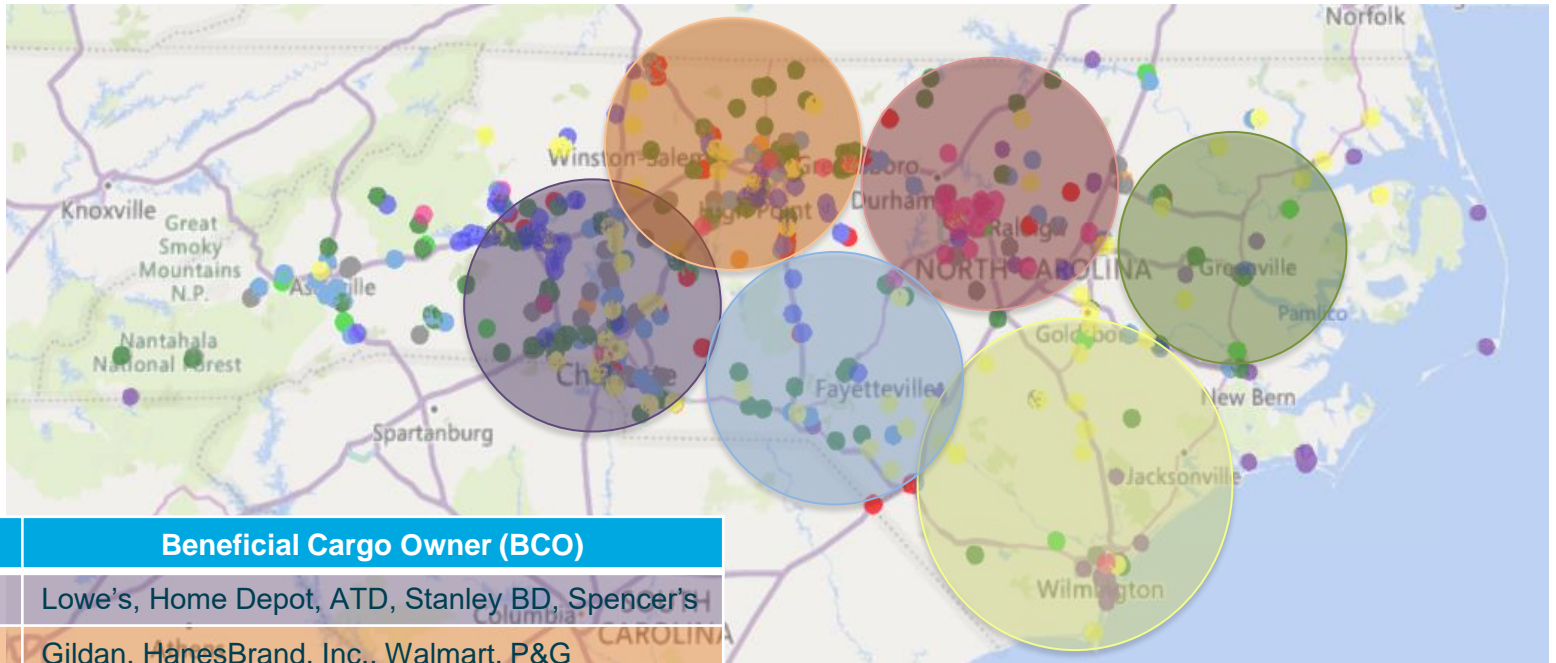
The Mission of NC Ports is to be the gateway to global markets and to enhance the economy of North Carolina by supporting and improving the State's logistics network.

Ports Support North Carolina



2018 Economic Contribution of the North Carolina Ports
Institute for Transportation Research and Education,
N.C. State University

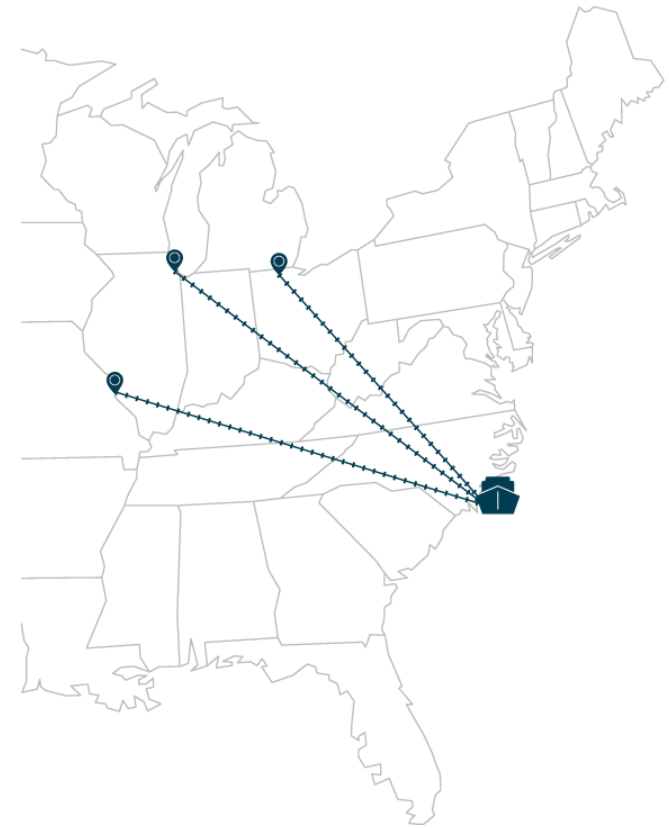
Diverse & Robust Local Market



Region	Beneficial Cargo Owner (BCO)
Greater Charlotte	Lowe's, Home Depot, ATD, Stanley BD, Spencer's
Piedmont Triad	Gildan, HanesBrand, Inc., Walmart, P&G
Research Triangle	Variety Wholesalers, Apex, Walmart, Implus
Greater Fayetteville	Sonoco Ellery, Harbor Freight, Goodyear, Quickie, QVC
Southeastern	IP, IFP, BSH, Gildan, Southern Produce
Northeastern	Corning, Lowe's, Universal Leaf, Ham Produce, QVC

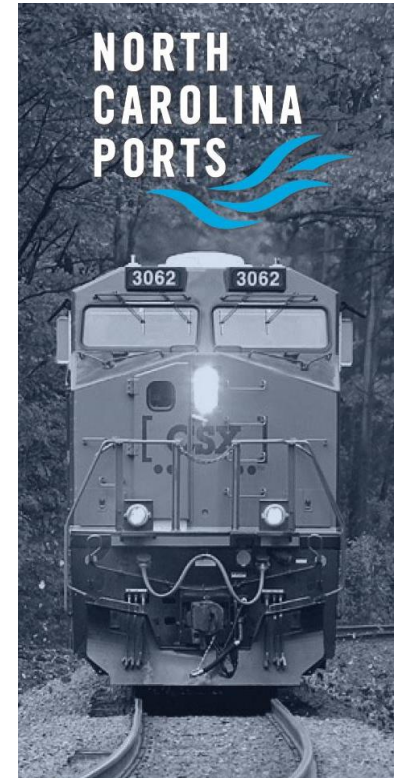
Wilmington Midwest Express

- Announced November 2021
- Operated by CSX via Rocky Mount, NC
Carolina Connector Intermodal Rail Facility
- Competitive rates, combined with no port congestion and no rail dwell making it the fastest ship-to-rail service on the East Coast
- **Import:**
 - Chicago → 5 days
 - Northwest Ohio → 5 days
 - St. Louis → 7 days
- **Export:**
 - Chicago → 4 days
 - Northwest Ohio → 4 days
 - St. Louis → 6 Days



Queen City Express

- Provides direct rail service moving double-stacked containers between the Port of Wilmington and Charlotte
- **Advantages:**
 - Lower transportation costs
 - Shortest direct rail service connecting Greater Charlotte Region
 - Shortens first and last mile transit
 - Reduces emissions
 - No dwell time at Port of Wilmington or Charlotte Inland Port (CIP)
 - Flexible staging and easy access at CIP



Superior Performance



Gate Productivity

Single turn:

19 minutes

Dual turn:

32 minutes



Vessel Productivity

39 net moves per hour;
capable of handling the
largest vessels calling
the East Coast



Productivity Awards

Ranked **#1** in North
America by The Journal
of Commerce for Overall
Productivity

Capital Improvements

\$256 Million Infrastructure Improvements Plan

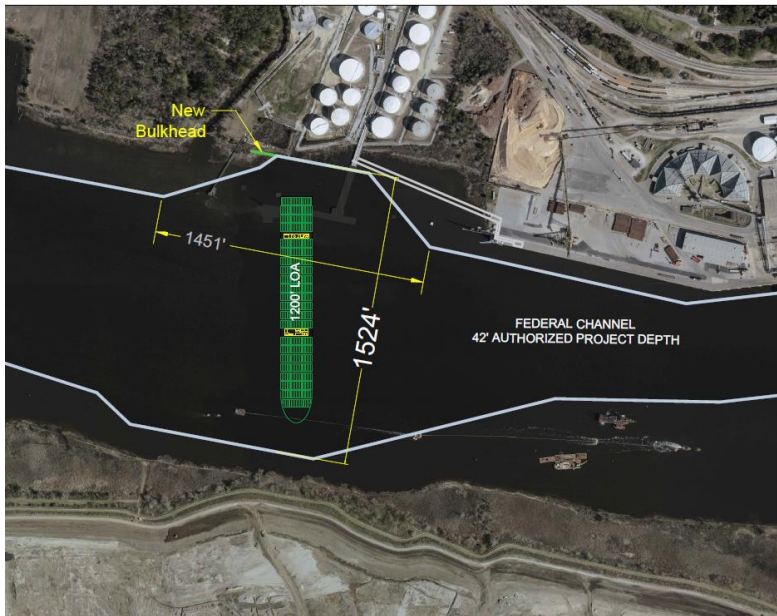
Project	Status
Berth Expansion	Complete
212' Air Draft Clearance	Complete
3 Neo-Panamax Cranes	Operational
Turning Basin Expansion – Phase II	Complete
Container Yard Expansion Master Plan	Underway
Wilmington Harbor Navigation Improvement Project	Conditionally Authorized



Berths & Neo-Panamax Cranes



Navigation Projects



Two-phase project to expand the turning basin to accommodate vessels over 1,200 feet long.



Project to raise the existing power lines 41 feet to allow for a 212 foot clearance.

Refrigerated Container Yard



Project Details

- \$14M
- 27 reefer racks
- 180 x 40' ground slots
- Currently has 760 fixed plugs (phase II will add 720 additional)
- New reefer service area

New Southgate Container Complex

- Opened in February 2022
- Features:
 - Increasing inbound lanes for truck traffic to 7, outbound lanes to 6
 - RFID technology, weigh-in-motion scales, optical character recognition
 - New terminal and gate operating systems
 - Connectivity with Customer Access Portal (CAP)



Looking To the Future

- Continued growth of cargo volumes
- Expand the global coverage of vessel services
- Engage and support state-wide economic development projects
- Develop the talent pipeline
- Build the NC Ports brand



2202 Burnett Blvd., Wilmington, NC 28401 | 800-334-0682 | ncports.com