



October 15 - 17, 2025

Sheraton Four Seasons - Greensboro, NC

Call for Proposals is now OPEN

Deadline for submission is April 17



<https://www.commerce.nc.gov/jobs-training/workforce-professionals-tools-resources/ncworks-training-center/ncworks-partnership-conference>



October 15 - 17, 2025

Sheraton Four Seasons - Greensboro, NC

**Nominations for Governor's NCWorks
Awards of Distinction are now being
accepted**

Deadline for submission is May 15



<https://www.commerce.nc.gov/jobs-training/workforce-professionals-tools-resources/ncworks-training-center/ncworks-partnership-conference>

Where can I find statewide and WDB LMI in one place?

LMI Tuesdays

March 3, 2025

Jamie Vaughn

Senior Analyst for Market Intelligence
NC Department of Commerce
Labor & Economic Analysis Division

Jeff Rosenthal

Manager, Occupational Analysis Group
NC Department of Commerce
Labor & Economic Analysis Division

Welcome to D4

Demand Driven Data Delivery

North Carolina's Official Labor Market Data Source

The most current and historical labor market information available.

View, share, and download statewide, local, and regional data.

North Carolina

Average Private Employment

4,189,761

Second Quarter, 2024

Quarterly Census of Employment & Wage (QCEW)

United States

Unemployment Rate (seasonally adjusted)

4.1%

December, 2024

Local Area Unemployment Statistics (LAUS)

North Carolina

Total Nonfarm Employment (seasonally adjusted)

5,050,700

December, 2024

Current Employment Statistics (CES)

North Carolina

Median Hourly Wage

\$21.85

Release year, 2023

Occupational Employment & Wage Statistics (OEWS)



Largest Employers

Largest Employers (QCEW)



Employment Projections

Industry and Occupational

Local Area Unemployment Statistics

Select Geography:

[Reset All Geographies](#)

[Select All Geographies](#)

- United States
- North Carolina
- County
- Cities (only LAUS)
- Workforce Development Area (WDB)
- Metropolitan Statistical Area (2013 Def)
- Micropolitan Statistical Area
- Combined Statistical Area
- Prosperity Zones

Local Area Unemployment Statistics (LAUS) ?

Type:

- Not Seasonally Adjusted
- Seasonally Adjusted

Year:

- 2025
- 2024
- 2023
- 2022
- 2021
- 2020
- 2019

Period:

- Annual Average
- January
- February
- March
- April
- May
- June

Data:

- LaborForce
- Employed
- Unemployed
- Unemployment Rate(%)
- Labor Force Participation Rate(%)
- Employment to Population Rate(%)

Graph Type:

- Original Data Value
- 1 Mth Net Change
- 1 Mth Percent Change



Area Name	Year	Month	Adjusted	LaborForce	Employed	Unemployed	Unemployment Rate(%)	Labor Force Participation Rate(%)	Employment to Population Rate(%)
North Carolina	2024	08	Not Seasonally Adjusted	5,251,868	5,027,974	223,894	4.3	60.1	57.5
North Carolina	2024	08	Seasonally Adjusted	5,267,076	5,067,483	199,593	3.8	60.3	58.0
North Carolina	2024	09	Not Seasonally Adjusted	5,264,818	5,097,099	167,719	3.2	60.2	58.2
North Carolina	2024	09	Seasonally Adjusted	5,266,034	5,068,157	197,877	3.8	60.2	57.9
North Carolina	2024	10	Not Seasonally Adjusted	5,267,231	5,077,315	189,916	3.6	60.1	57.9
North Carolina	2024	10	Seasonally Adjusted	5,264,401	5,067,396	197,005	3.7	60.1	57.8
North Carolina	2024	11	Not Seasonally Adjusted	5,241,197	5,047,315	193,882	3.7	59.7	57.5
North Carolina	2024	11	Seasonally Adjusted	5,262,844	5,065,730	197,114	3.7	60.0	57.7
North Carolina	2024	12	Not Seasonally Adjusted	5,220,480	5,041,982	178,498	3.4	59.4	57.4
North Carolina	2024	12	Seasonally Adjusted	5,263,880	5,066,954	196,926	3.7	59.9	57.7

Additional information regarding the LAUS program including data for other states and geographical areas can be accessed on the Bureau of Labor Statistics website at <https://www.bls.gov/laus/>

What we heard from customers...

- I don't want to do analysis; I just want one data point.
- How do I know what is the most recent data?
- How does this data compare with other areas?
- What is the best way to share data with our customers?

LEAD ANALYTICS

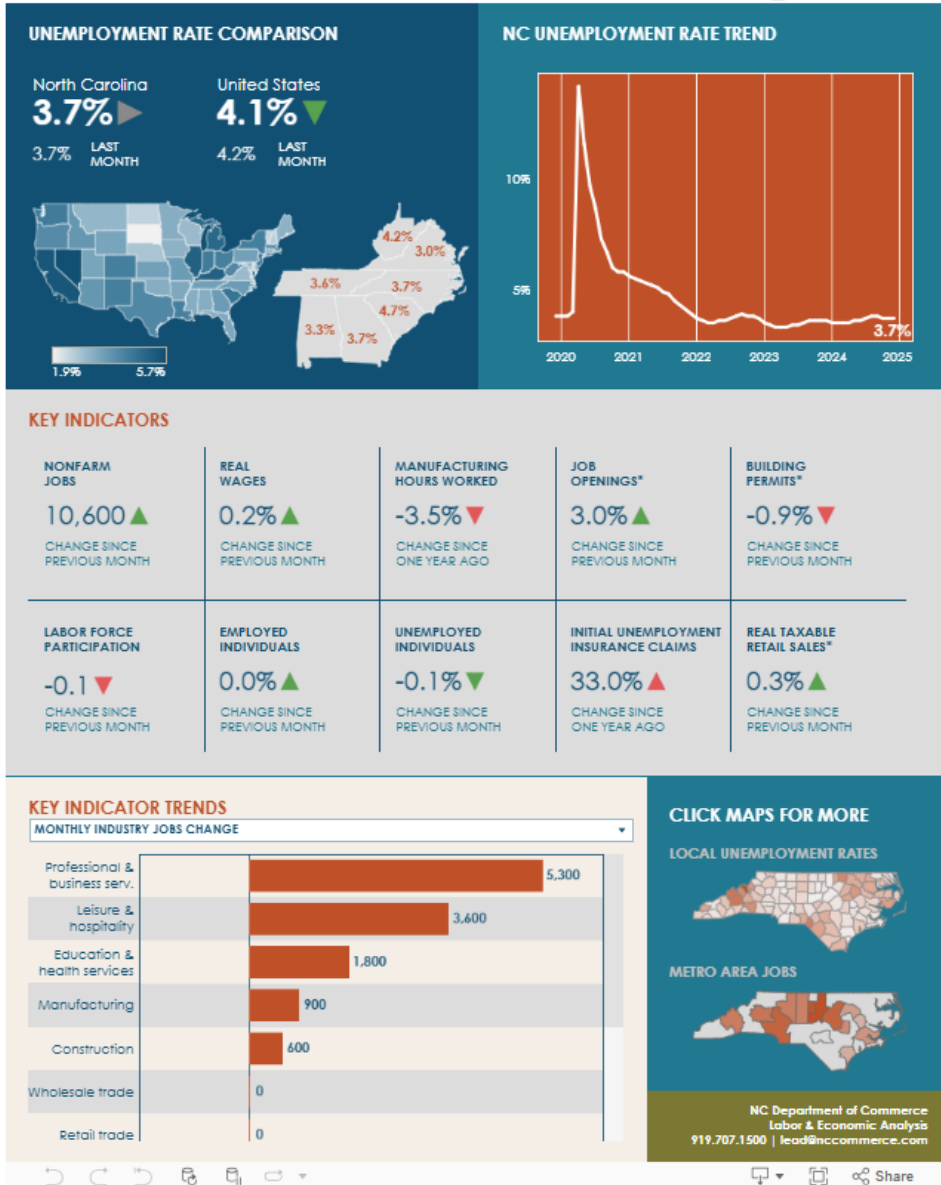
Dashboards & Data Access Tools

Visualize and interact with North Carolina's economic and labor market statistics and trends.



Economic Overviews

- > **NC Today** – LEAD's monthly summary of North Carolina's labor and economic data and trends. LEAD's monthly summary of North Carolina's labor and economic data and trends.
- > **Regional Labor Market Overviews** – Monthly summary of labor market data for each NC workforce development board region.
- > **Area Profiles** – Economic and demographic overviews by county, workforce board area, and prosperity zone. Includes monthly and annual data, updated monthly.

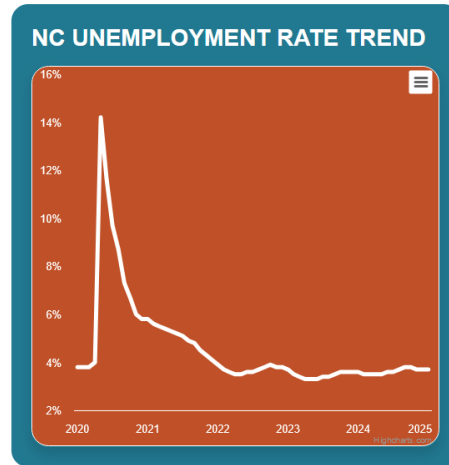
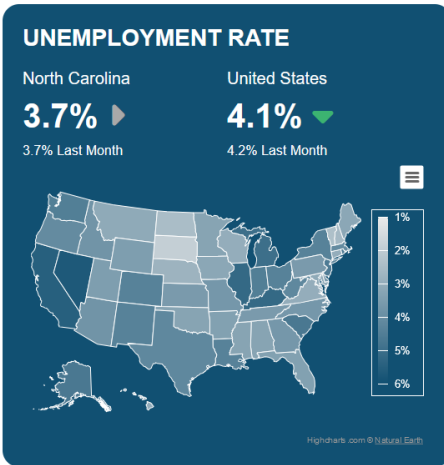


<https://analytics.nccommerce.com/NC-Today/>

New updates coming...

- Mobile Friendly
- Faster to use
- Combine three pages into one

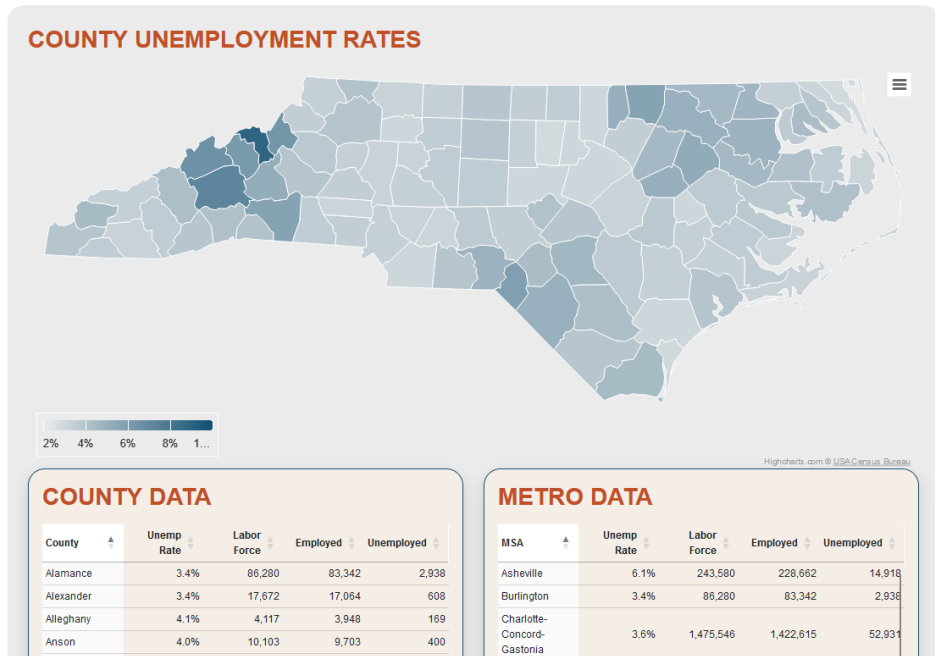
NC TODAY | » December 2024



KEY INDICATORS

- NONFARM JOBS
- REAL WAGES
- MFG PRODUCTION HOURS
- JOB OPENINGS
- BUILDING PERMITS

LOCAL LABOR FORCE | » December 2024



The logo for LEAD ANALYTICS features the word "LEAD" in large, bold, white capital letters with a blue outline, and "ANALYTICS" in smaller, white capital letters below it. The background is a blue-tinted image of a hand holding a blue pen over a document.

Dashboards & Data Access Tools

Visualize and interact with North Carolina's economic and labor market statistics and trends.



Economic Overviews

- > **NC Today** – LEAD's monthly summary of North Carolina's labor and economic data and trends. LEAD's monthly summary of North Carolina's labor and economic data and trends.
- > **Regional Labor Market Overviews** – Monthly summary of labor market data for each NC workforce development board region.
- > **Area Profiles** – Economic and demographic overviews by county, workforce board area, and prosperity zone. Includes monthly and annual data, updated monthly.



REGIONAL LABOR MARKET OVERVIEW

» Cape Fear WDB | December 2024 Data*



MONTHLY TRENDS

NC Department of Commerce | Labor & Economic Analysis | 919.707.1500 | lead@nccommerce.com

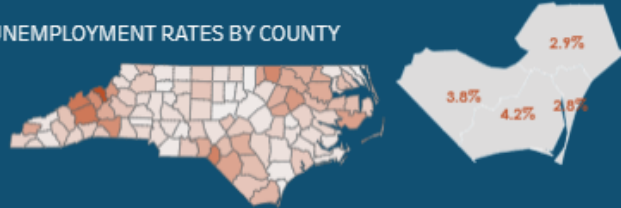
Unemployed Individuals **7,893**

3.2%

North Carolina 3.7%
United States 4.1%

3.4% LAST MONTH

UNEMPLOYMENT RATES BY COUNTY



Employed Individuals **235,876**

Labor Force **243,769**

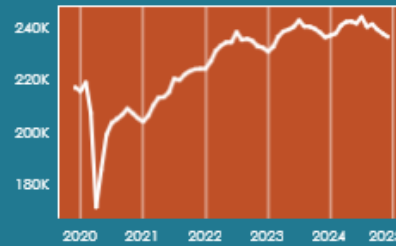
-1,249

CHANGE IN EMPLOYED FROM PREVIOUS MONTH

227

CHANGE IN EMPLOYED FROM ONE YEAR AGO

NUMBER OF EMPLOYED OVER LAST 5 YEARS



past 90 days from January 29, 2025

WHO'S HIRING

- Novant Health, Inc. 694
- University of North Carolina at Wilmington 218
- Wilmington Health 159
- Cape Fear Community College 121
- Pender County Schools 118
- McDonald's Corporation 95
- Walmart Inc. 90
- Black & Veatch Holding Company 88

WHAT JOBS

- Registered Nurses 430
- Retail Salespersons 129
- Nursing Assistants 101
- Licensed Practical and Vocational Nurses 93
- Customer Service Representatives 78
- General and Operations Managers 73
- Fast Food and Counter Workers 70
- First-Line Supervisors of Retail Sales Workers 69

METRO JOBS

Wilmington MSA 151,200

200

CHANGE IN JOBS FROM PREVIOUS MONTH

Industry Detail

TAXABLE RETAIL SALES

\$1,043,458,771

6.1% CHANGE FROM ONE YEAR AGO

JOB OPENINGS

18,375

672 CHANGE FROM PREVIOUS MONTH

*December 2024 data is preliminary. Taxable Retail Sales data reflect November 2024 and Job Openings data reflect November 2024.



<https://analytics.nccommerce.com/Regional-Labor-Market-Overviews/>

Delivered to your inbox...

NORTH CAROLINA'S ECONOMY IN NUMBERS



The Big Picture

Job growth in the Asheville area surged in November and was revised upward for October. Preliminary estimates indicate that, as of November, Asheville MSA recovered most of the jobs it lost during Hurricane Helene. However, Asheville's labor market recovery remains incomplete, and its prospects for a full recovery are uncertain. Meanwhile, North Carolina employers added a net total of 15,000 jobs statewide in November.

From the NCToday Dashboard

November 2024 data, unless otherwise noted. For more data and trends from NCToday, [click here](#).

Labor Market Statistics

3.7% NC Unemployment Rate (3.7% last month)

US Unemployment Rate: **4.2%** (4.1% last month)

[Change from the previous month](#)

Employed individuals: **-1,747 (0.0%)**

Unemployed individuals: **109 (0.1%)**

Labor force participation rate: **-0.1** pct points

Source: Local Area Unemployment Statistics (LAUS), seasonally adjusted



North Carolina Nonfarm Jobs

15,000 more jobs

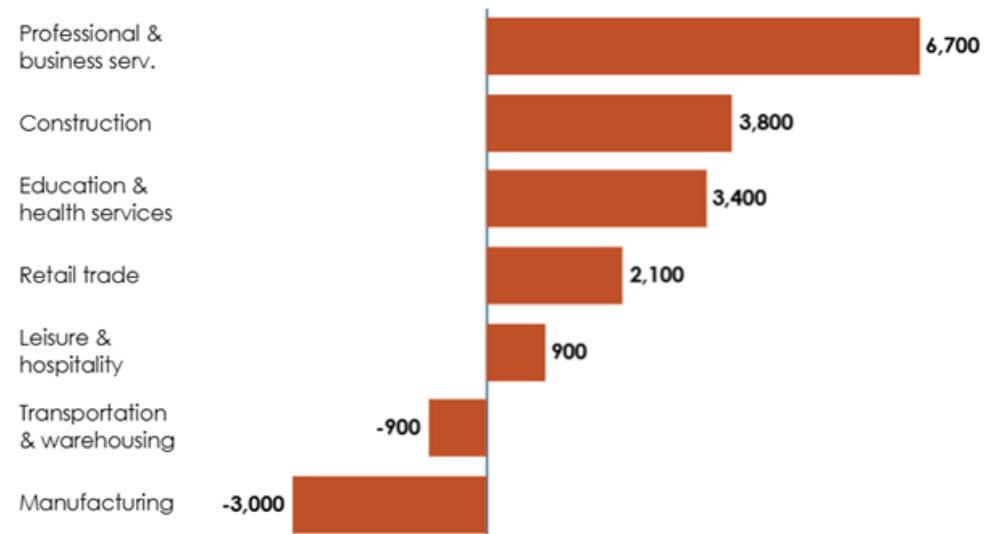
up **0.3%** from previous month

5,042,000 total jobs in NC

Source: Current Employment Statistics (CES), seasonally adjusted

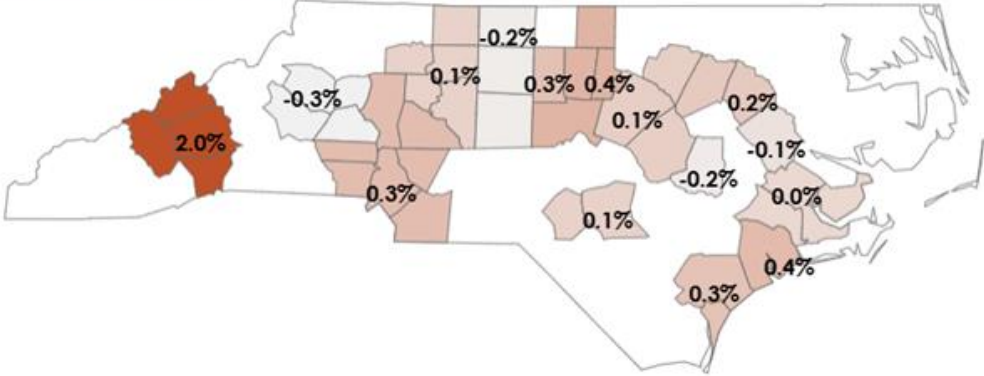


Top Monthly Employment Changes by Industry



Delivered to your inbox...

Monthly Metro Area Job Growth



Source: Current Employment Statistics (CES), seasonally adjusted

Key Economic Indicators

NONFARM JOBS 15,000 ▲ <small>CHANGE SINCE PREVIOUS MONTH</small>	REAL WAGES 0.1% ▲ <small>CHANGE SINCE PREVIOUS MONTH</small>	MANUFACTURING HOURS WORKED -2.0% ▼ <small>CHANGE SINCE ONE YEAR AGO</small>	JOB OPENINGS* -0.1% ▼ <small>CHANGE SINCE PREVIOUS MONTH</small>	BUILDING PERMITS* -0.6% ▼ <small>CHANGE SINCE PREVIOUS MONTH</small>
LABOR FORCE PARTICIPATION -0.1 ▼ <small>CHANGE SINCE PREVIOUS MONTH</small>	EMPLOYED INDIVIDUALS 0.0% ▼ <small>CHANGE SINCE PREVIOUS MONTH</small>	UNEMPLOYED INDIVIDUALS 0.1% ▲ <small>CHANGE SINCE PREVIOUS MONTH</small>	INITIAL UNEMPLOYMENT INSURANCE CLAIMS 16.4% ▲ <small>CHANGE SINCE ONE YEAR AGO</small>	REAL TAXABLE RETAIL SALES* -0.9% ▼ <small>CHANGE SINCE PREVIOUS MONTH</small>

*Job Openings reflect October 2024; Building Permits reflect October 2024; Taxable Retail Sales reflect October 2024.

Various sources. Click the image for more detail.

Insights... From the LEAD Feed

The most read articles of 2024 include

[Insights on Generative AI and the Future of Work](#)

After LEAD published our first article discussing ChatGPT, we have continued to learn and develop new insights that reshape our understanding of generative artificial intelligence (AI) and the workforce. Here are the top five things we have learned so far.

[What Industries Are Using AI? Current Use and Future Expectations](#)

This article examines industry differences in artificial intelligence (AI) adoption rates, specific applications, and expectations for employment changes across the nation. By understanding these trends, we aim to extrapolate insights relevant to North Carolina.

[The Impact of Immigration on North Carolina's Workforce](#)

The aging of North Carolina's workforce coupled with slowing population growth speaks to the ever-increasing role that immigration will play in alleviating labor shortages in the years to come. Yet despite its economic importance, international migration remains lower than levels seen in past decades, and COVID-19 disruptions have further hampered immigration in recent years. In this article, we dive deeper into the impact that immigration has on the state's workforce.

[Not Your Grandfather's Manufacturing: How North Carolina industry has changed since the 1990s](#)

The second in a series on Manufacturing in North Carolina, this article explores the sector's economic trends over the last 30 years.

[Five Big Challenges for NC Manufacturers in the Industry 4.0 Era](#)

North Carolina has successfully positioned itself as a global leader in manufacturing. But as revealed in a new report from the NC Department of Commerce and NC State's Manufacturing Extension Partnership (MEP), Best Practices for Growing Manufacturing in North Carolina, maintaining that edge in the Fourth Industrial Revolution is not without its challenges. Implementing cutting-edge "Industry 4.0" technologies like robotics, the internet of things (IoT), and data analytics won't be easy for employers.

LEAD ANALYTICS

Dashboards & Data Access Tools

Visualize and interact with North Carolina's economic and labor market statistics and trends.



NC BOLD

Do you have a license for that? Explore occupations and the hundreds of business, occupational, and privilege licenses issued in North Carolina, including how, where, and when to apply.



Commuting Profiles

How many people live and work in your county? Where are people traveling to and from? Access a Commuting Profile for any of North Carolina's 100 counties.



Newsletters

Subscribe to LEAD's two monthly newsletters. NC's Economy in Numbers looks at the latest state economic data and insights. The LEADing News provides county-level unemployment rates and highlights products, data, research, and news from LEAD.



<https://www.commerce.nc.gov/news/newsletter-subscription-center>

About the LEAD Feed...

Recent Article Topics

- NC Economy Watch
- Poverty Reduction
- Western NC Recovery
- Artificial Intelligence
- NC's Manufacturing Industry
- Housing



<https://www.commerce.nc.gov/news/the-lead-feed>